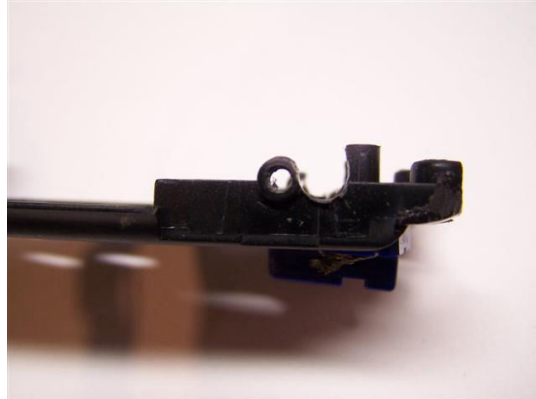


RMS 1967 Cougar Kit Addendum

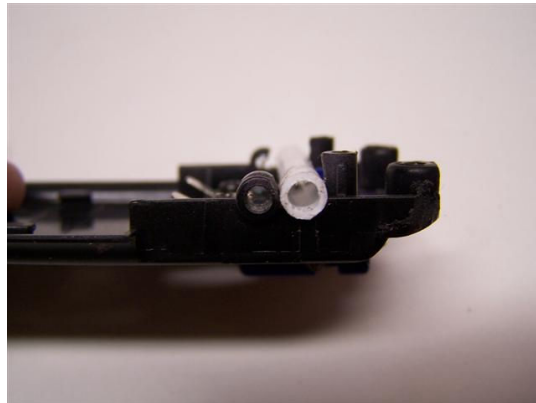
The Cougar was based on the Mustang platform, but had a 3" longer wheelbase. As such, the Scalextric Mustang chassis needs to be modified in order to fit the Cougar body.

The following pictures show how the wheelbase should be modified.

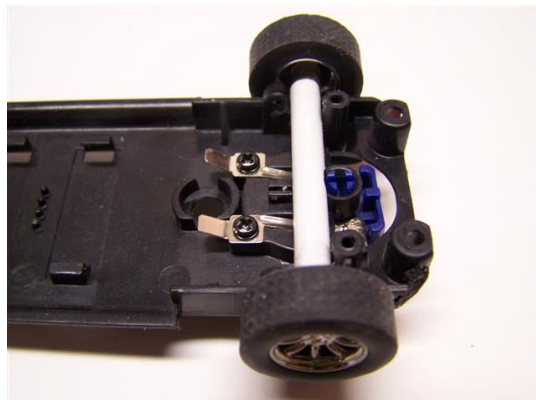
Begin by notching the chassis in front of the original axle boss.



Fit a piece of styrene tubing in as the new axle boss and once satisfied with the fit, glue into place.
NOTE: You will need to "notch" the tube in the middle to clear the guide.



When completed, it should look like this:



Enjoy!